



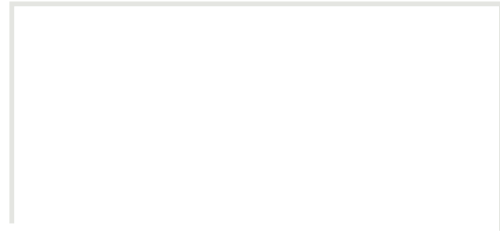
CENTRAL PARK

JA-ELA



Kelsey Developments PLC

No.15, Walukarama Road, Colombo 03, Sri Lanka
sales@kelsey.lk www.kelsey.lk



Live Modernity in Nature



CENTRAL PARK

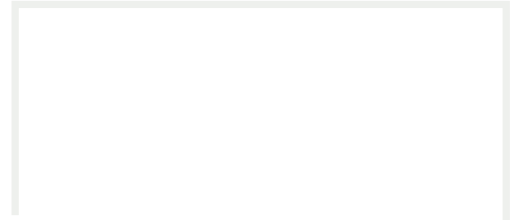
JA-ELA

Welcome to Kelsey Homes

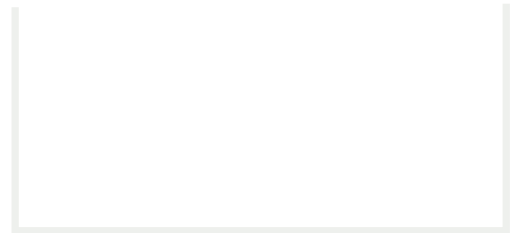
You have so many factors to consider before moving into your new dream home. After all, it is a lifetime investment. The credentials and track record of the property developer is a key element and it is of paramount importance. Our achievements spanning over 35 years will lie to rest all your concerns. 200 plus completed housing projects and over 2000 satisfied customers under one's belt is an accomplishment that very few property developers could boast about. Kelsey Homes the premier housing developer in Sri-Lanka is a fully owned subsidiary of Kelsey Developments PLC (Part of the Dunamis Capital PLC and Janashakthi Group). Kelsey Homes is a company listed on the Colombo Stock exchange and is a brand which is synonymous with gated housing developments and luxury living. The company's more recent projects include Templer's Square – Mount Lavinia, Verdant Villas – Negombo, Urban Heights- Wattala, and Urban Gateway – Kottawa.

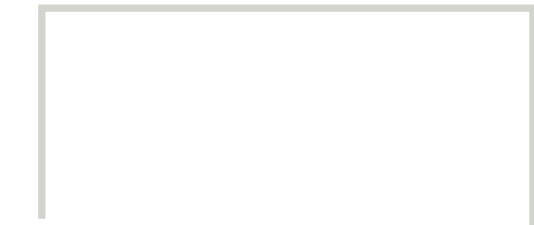
Have no regrets...join the elite group of over 2000 satisfied customers who are so proud of their homes





You are connected
when you live in Ja-Ela





Your home in the Hub

Right in the centre of all activity of Greater Colombo, in Ja-Ela there exists a park where few are privileged to make their home. Central Park Ja-Ela is like a hub of a wheel where all the conveniences of city life such as Super Markets, Schools, Banks, Restaurants, Cafes, and the transportation hub surrounds you.



Super Markets
Keells Super
Cargills Food City



Schools
St Marys Institute
Atamie Internayional
Nimala MAriya MV



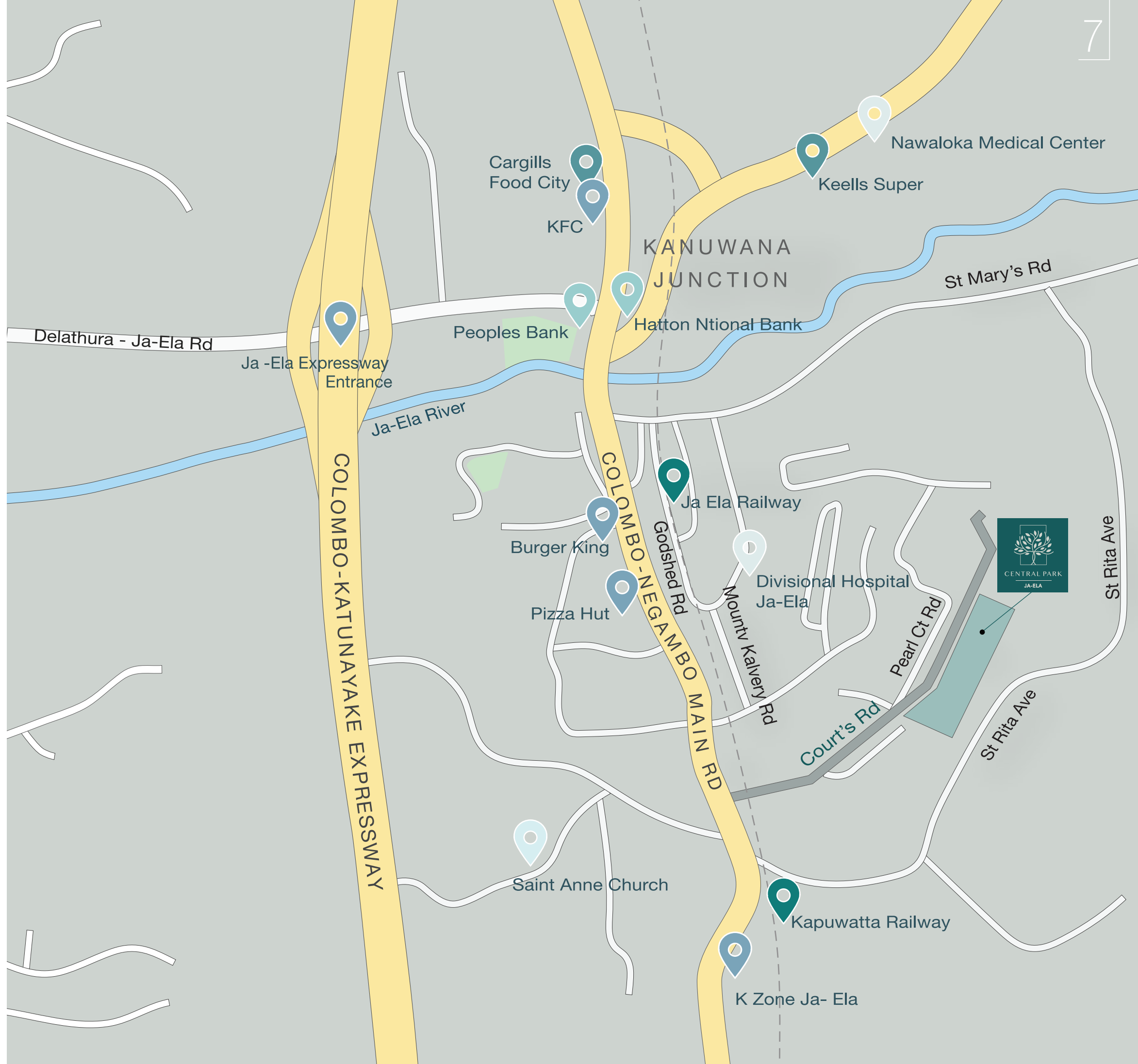
Banks
Hatton National Bank
Peoples Bank
Pan Asia Bank



Transportation
Colombo Katunayake
Expressway
Ja-ela Railway



Restaurants
K Zone
Pizza Hut
Burger King



Come to our shade

Become one with Nature. Wake up to the sound of music. Learn the language of the Birds. Smell the sweet flowers daily. Make your home surrounded by trees.





CENTRAL PARK
JA-ELA

Ja-Ela The Destination to Live

Ja-Ela, one of the most central locations in the country is conveniently located with close proximity to leading schools, hospitals, banks and super markets. It is only 5 minutes away from the highway entrance, 20 minutes to Katunayake and 30 minutes to The Port City in 2022 via the port access elevated highway.

If you enjoy living amidst nature in a location that is "Central to everything" then Central Park Ja-Ela is the ideal home for you.

The Property spans across 15 acres of land and will consist of 300 graciously appointed two, three and four bedroomed houses and apartments. This Gated Development, that has an iconic Nuga tree at the center of the property, is located only 500m from the Colombo-Negambo road and embodies the perfect balance of nature and healthy living with modern comforts.

Central park Ja-ela, offers a repertoire of unparalleled services and 40+ amenities that includes a fully equipped Gymnasium, Out door pool, Club house, Natural ponds, Garden areas, Jogging track, Yoga studio, Day care center, Open kids play areas, Wellness Center, Supermarket and Cafe amid a relaxing and beautiful atmosphere.

We look forward to present you Central park Ja-ela and work with you to build your dream home.

All housing units are designed by Murad Ismail and Channa Daswatte of MICD Associates. Deepal Wickremasinghe Associates (Pvt) Ltd are the Structural Engineers of Central Park Ja-Ela.



Where Leisure is redefined

At Central Park Ja-Ela, your life will be complete with pleasure and bliss. As a child would do, cast your worries and enjoy the pool, clubhouse, gymnasium, tennis court and 40+ amenities.



Everything you could ask for

- 24 x 7 Security
- CCTV Surveillance
- Mini Market
- ATM Facility
- Bill Paying Facility
- Book Shop
- Salon
- Area for Tuition classes
- Medical Centre
- Pastry Shop
- Business Centre
- Roof Terrace Party Area
- Office Room
- Day Care Centre
- Kids Play Area - indoor
- Laundry Service
- Cafe
- Garbage Drive Through
- Foot Relaxing Path
- Herbal Garden
- Spice Garden
- Outdoor Gymnasium
- Natural Trail
- Outdoor BBQ Area
- Reception Lounge
- Open Pavilion in Ground
- Floor Facing Pool
- Open Function Hall
- Facing Pool in First floor
- Kids Pool
- Swimming Pool
- Fully Equipped Gymnasium
- Steam Room
- Jogging Track
- Kids Play Zone - Outdoor
- Covered Function Hall
- Ground Floor
- Charging Station
- Washing Bay
- Basketball Court
- Club House
- Yoga Center
- Wellness Center
- Visitors Parking

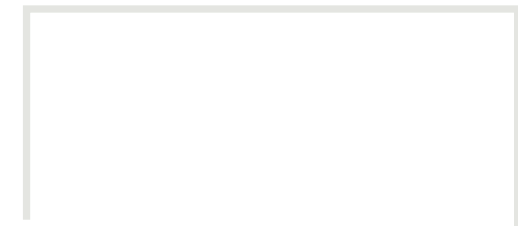


Enrich the Quality
of Your Life



6 Perch Housing Units

We are more extravagant with space as we extend to you more reasons for you to consider Central Park as THE destination to live. Inhale, Exhale, Live, enjoy Central Park.



Interior that is divine

The architecture is sublime and unmatched to give you a feeling of accomplishment as you invigorate your senses midst a natural habitat. Yes, there is heaven outside and bliss within.

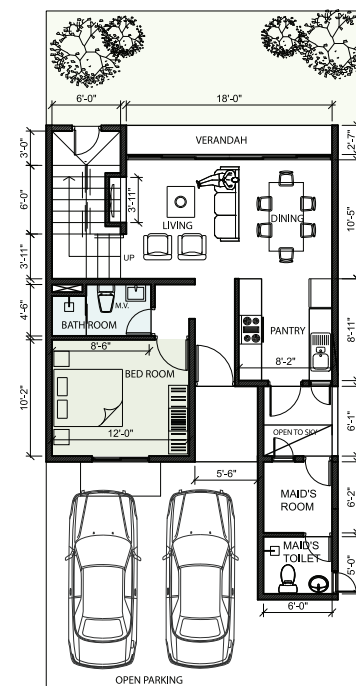




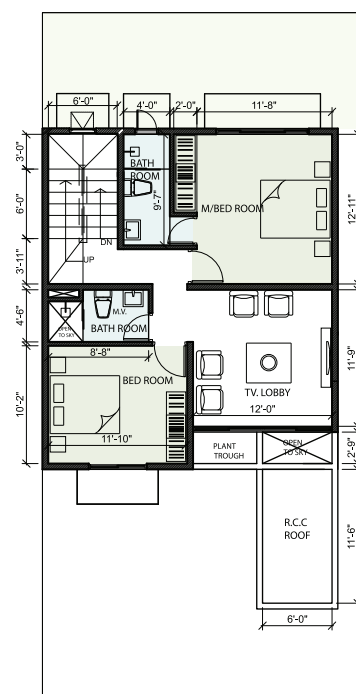
4 BED ROOM

2210 SQFT | 4 BEDROOMS | LIVING/ DINING | 3 BATHROOMS | PANTRY

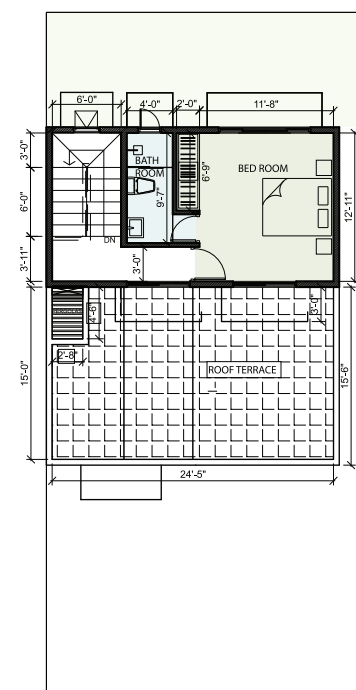
GROUND FLOOR



1ST FLOOR



ROOF TOP

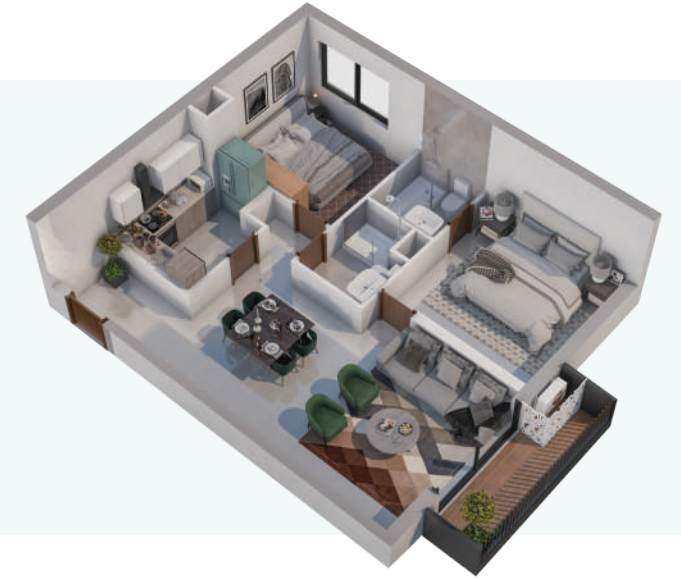
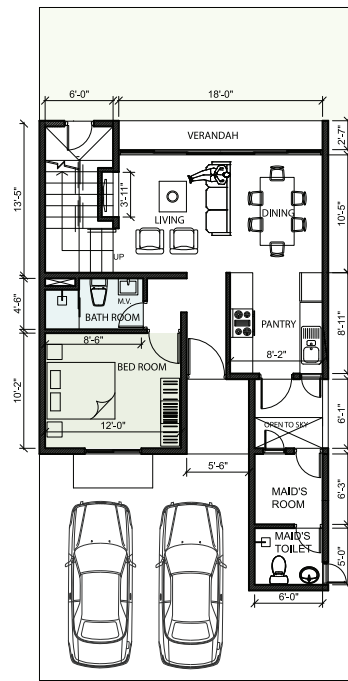




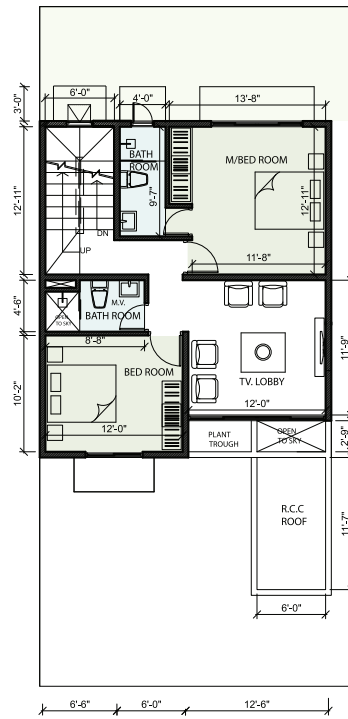
3 BED ROOM

2218 SQFT | 3 BEDROOMS | LIVING/ DINING | 3 BATHROOMS | PANTRY

GROUND FLOOR



1ST FLOOR



ROOF TOP

